

BLAST CABINET PARTS

The PanBlast™ range of blast cabinet parts consists of a variety of suction blast guns and cartridge filters that can be used in both PanBlast™ blast cabinets and generic third-party blast cabinets, in both manual and automatic configurations.



CAT-1201-07-00 Page 566 to 567



CS48 Gun Assembly

- Ergonomic unibody design ideal for manual cabinets
- Economical ceramic nozzles supplied standard

GENERIC



CAT-1201-01-00 Page 568 to 571



Delta-M CS
1/8 x 1/4



Delta-M GDF
3/32 x 1/4



Delta-M GDF
1/8 x 1/4



Delta-M GDF
3/16 x 3/8

- Ergonomic, lightweight design for reduced operator fatigue
- Hardened steel air tip for longer service life
- Aluminum jacketed, tungsten carbide nozzles
- Mounting lug for manual gun stand attachment

DELTA GDF MANUAL



CAT-1201-02-00 Page 572 to 575



Delta-A CS
1/8 x 1/4



Delta-A GDF
3/32 x 1/4



Delta-A GDF
1/8 x 1/4



Delta-A GDF
3/16 x 3/8

- Ergonomic, lightweight design for more efficient mounting and manipulation
- Case hardened steel air tip for longer service life
- Aluminum jacketed, tungsten carbide blast nozzles
- Mounting lug for quick attachment to bracket and/or manipulator
- Optional hardened heavy-duty air tip available

DELTA GDF AUTO



CAT-1201-03-00 Page 576 to 579



Delta-M
5 mm Boron Nozzle



Delta-M
6 mm Boron Nozzle



Delta-M
8 mm Boron Nozzle



Delta-M
9 mm Boron Nozzle



Delta-M SNH
3/32 x 3/16



Delta-M SNH
1/8 x 1/4



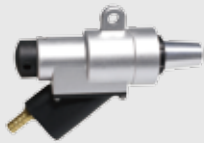
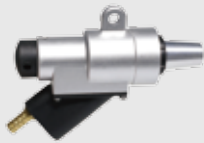
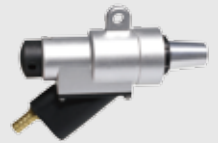
Delta-M SNH
3/16 x 11/32

- Ergonomic, lightweight design for reduced operator fatigue
- Hardened steel air tip for longer service life
- Available with either boron carbide or ceramic blast nozzle
- Mounting lug for gun stand attachment

DELTA SNH MANUAL



CAT-1201-04-00 Page 580 to 583

**Delta-A**
5 mm Boron Nozzle**Delta-A**
6 mm Boron Nozzle**Delta-A**
8 mm Boron Nozzle**Delta-A**
9 mm Boron Nozzle**Delta-A SNH**
3/32 x 1/4**Delta-A SNH**
1/8 x 1/4**Delta-A SNH**
3/16 x 11/32

- Ergonomic, lightweight design for more efficient mounting and manipulation
- Case hardened steel air tip for longer service life
- Optional hardened heavy-duty air tip available
- Available with either boron carbide or ceramic blast nozzles
- Mounting lug for quick, simple attachment to bracket and/or manipulator

DELTA SNH AUTO

CAT-1201-05-00 Page 584 to 587

**Godfrey**
3/32 x 3/16**Godfrey**
1/16 x 3/16**Godfrey**
1/8 x 1/4**Godfrey**
3/16 x 3/8**Godfrey**
1/4 x 1/2**Godfrey**
1/8 x 3/8

- Conventional heavy-duty design ideal for manual cabinets
- Long life nozzle injector tips and tungsten nozzles to suit application

GODFREY SUCTION

CAT-1201-06-00 Page 588 to 591

**Omega**
6 mm Boron Nozzle**Omega**
9 mm Boron Nozzle**Omega**
6.4 mm Ceramic Nozzle**Omega**
7.9 mm Ceramic Nozzle**Omega**
9.5 mm Ceramic Nozzle

- Economical ceramic nozzles supplied standard
- For use in both manual and automated blast cabinets
- Optional ultra long life boron carbide nozzles

OMEGA SUCTION

CAT-1202-01-01 Page 592 to 593

**Size 1**
(Open/Close)**Size 2**
(Open/Close)**Size 2**
(Open/Open)**Size 3**
(Open/Close)**Size 4**
(Open/Open)**Size 5**
(Open/Open)**Size 6**
(Open/Close)**Size 7**
(Open/Open)**Size 7**
(Open/Close)

- Durable double pleated cellulose/polyester media
- MERV13 Filtration efficiency
- Either bands or metal cages to keep fabric media intact during pulse cleaning
- Rubber gasket sealing for open ends
- Custom sizes and design upon request

FILTER CARTRIDGES